

 **Rolfstone**

Heating Blanket

Manual

Not just any blanket...

The Rolfstone Heating Blanket is not just any blanket. It brings warmth and comfort within reach, wherever you desire. Crafted from soft materials and equipped with heating technology, this blanket offers delightful additional warmth.

Whether you're cosily lying on the sofa during cold autumn and winter evenings, sitting in an office chair while working, or spending time outdoors on a cooler summer evening; this heated blanket is your ideal companion. It provides exactly that extra warmth when you need it. Perfect for unwinding after an intensive day, to soothe tired muscles, or to make work more comfortable when it's just a bit too cold for you in the office. And feel free to turn down the thermostat at home, because the Rolfstone Heating Blanket will keep you comfortably warm.

Use it in your own way and discover how the Rolfstone Heating Blanket can make your life more pleasant and experience the beneficial warmth it offers.

We have developed this product with great care and attention to make both your relaxation moments and your working hours even more enjoyable. We sincerely hope that you will enjoy using this heating blanket as much as we enjoyed creating it. We look forward to hearing about your experiences with our heating blanket!

Jos, Joris, and Alfred,
Founders of Rolfstone

First Time Use

1. Connect the Power Bank

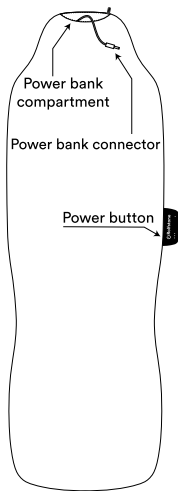
- Open the zip of the power bank compartment.
- Connect the power bank connector to the power bank.
- Put everything back and close the zip.
- Fully charge the heating blanket (see page 6).

2. Turn On

- Switch on the heating blanket.
- Press again, if desired, to change the heat level.



Scan the QR code for a detailed video explanation about the use of the Rolfstone Heating Blanket and to view this manual in other languages.



Watch the video!

Operation and Heating

Press the power button to turn on the heating blanket.

The blanket starts by default at the highest setting ●●●. With each subsequent press of the button, the setting changes to medium ●●, then to low ●, and finally the heated blanket is turned off.

Modus	Temperature	Heating time
●●● High	45-47°C degrees	3 hours
●● Medium	40-42°C degrees	4 hours
● Low	36-38°C degrees	6 hours

** The actual temperature, heating duration, and charging time may vary due to the ambient temperature and the condition of the power bank. For safety, the heating blanket automatically turns off after 2.5 hours.*

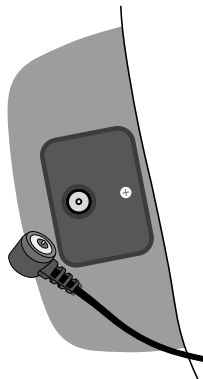
The indicated heating time is based on a fully charged power bank.

Charging

Ensure that the power bank is correctly connected to the connector in the heating blanket (see page 4). For charging, use only the adapter provided. Connect the charging cable to the port behind the green label. Thanks to a magnet, it will automatically click into place.

Fully charging the power bank takes about 5 hours.
It is possible to use the heating blanket while it is charging.

IMPORTANT: Use only the original Rolfstone adapter and power bank.



Status	Light on the Label	Light on the Adapter
Charging in Progress	● Green	■ Red
Fully Charged	● Off	■ Green

Washing the Blanket Cover

The blanket cover can be washed. Turn off the heating blanket, open the zipper, and remove the inner part. Also, disconnect the power bank.



Hand wash gently



Water max. 30°C degrees



Do not machine wash



Do not tumble dry



Do not bleach



Do not iron



Do not dry clean

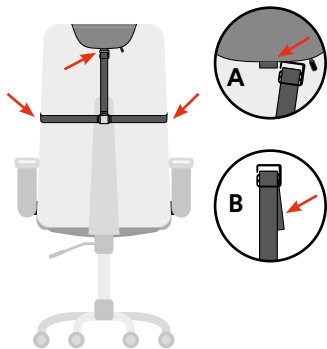
Important: The inner part can be cleaned with a damp cloth, but should not be washed, either in a machine or by hand. Washing can damage the internal components and potentially make the use of the heating blanket dangerous.

Accessories

Chair Strap

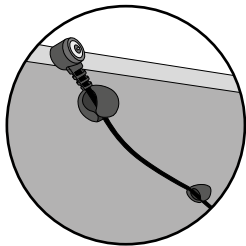
For chairs with a high backrest, use the Chair Strap to keep the heating blanket securely in place. Attach the hooks of the Chair Strap to the three loops (A) on the heating blanket.

The Chair Strap is made of elastic material, which helps keep the blanket in position. The strap can be tightened or loosened at the ends near the hooks (B) if necessary.



Cable Clips

With the Cable Clips, the adapter's cord can be neatly stored when not in use. For example, place the clips under a desk and press the cord into the clip, keeping it out of the way. Multiple clips are included, allowing you to store the cord in the most convenient way for your situation.



Usage Tips

Optimal use of your heating blanket

When you switch on the heating blanket, it may take a few minutes before you start feeling the warmth. This is completely normal. After about 8 minutes, you will feel the full heat.

For optimal warmth, ensure you are sitting closely against the heating element.

With thicker clothing, it might take slightly longer to feel the full warmth.

After about half an hour, you may notice that the heat is so effective that you can lower the heat setting. From an initial level 3, you can switch to level 2 or sometimes even level 1 and still enjoy comfortable warmth. An added benefit is that the power bank will last longer on a lower setting before it needs recharging!

Fully charge the power bank

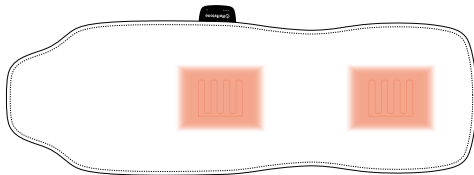
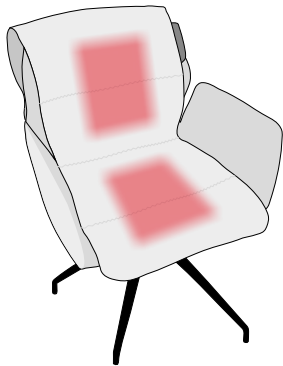
The included power bank has a large charging capacity, which means it takes about 5 hours to fully charge. It is recommended to fully charge the power bank after each use (see page 6). If the power bank is not fully charged, the blanket will →

provide heat for a shorter period.

When you notice that the blanket stays warm for only a short time, the power bank likely wasn't fully charged.

Two heating zones

The heating blanket is equipped with two heating zones: one in the seating area and another in the lower back.



Attach the Chair Strap if the chair has a high backrest

If the backrest is high, the heating blanket may not stay in place properly. The Chair Strap ensures the heating blanket stays securely in place. See page 8 for more information.

Storing the heating blanket for an extended period

If you plan to store the heating blanket for an extended period, follow the tips below:

- Fully charge the power bank and then disconnect it by removing the connector (see page 4). Be sure not to store the power bank while it's empty!
- Recharge the power bank every 2 to 3 months to keep it in good condition and extend its lifespan. Store the power bank in a cool place.
- Do not roll the heating blanket tightly; instead, roll it loosely to keep the heating panels in good condition. Avoid placing heavy objects on the rolled-up heating blanket.
- At www.rolfstone.com, a convenient travel bag is available, allowing you to easily take the heating blanket with you and store it neatly.

Power Supply and Cord

Use only the adapter provided. Using a different adapter can cause danger and permanent damage to the product and surroundings.

Keep the cord away from areas where people frequently walk.

This charger uses standard EU 220V~, 50-60Hz outlets.

Check for compatibility if you are using the heating blanket outside the UK.

Specifications

Adapter: 100-240 V AC, 50/60hrz

Powerbank 5.000mAh Li-ion(7.4V)/37Wh

Charging Time: 5 hours

Blanket Size: 44×134cm

Material: 100% Polyester

In the Package

- Heating Blanket
- Power Bank
- Adapter
- Chair Strap
- Cable Clips
- Manual

Warranty

The Rolfstone heating blanket comes with a one-year warranty. For issues within this period that are not due to improper use or damage from external influences, we recommend contacting customer service (see page 15).

Safety Information

- Use only the original Rolfstone adaptor and power bank.
- Not suitable for extremely vulnerable and heat-sensitive individuals.
- Do not use on bare skin.
- Unsuitable for children under 3 years as they are less responsive to overheating.
- Children (3-8 years) should only use this product under adult supervision.
- Prolonged continuous use may cause skin discomfort. Reduce the heat level in this case.
- Do not use if the product is wet.
- Keep the heating blanket away from other heat sources.
- The inner cushion is removable but not washable.
- Protect the heating blanket from moisture and store the product indoors.
- To prevent damage, do not fold the product at the heating elements (see page 10) during use or storage.
- If the product is not used for an extended period, disconnect the power bank by detaching the connector. (see page 4 and page 11).
- Regularly inspect for damage. Contact Rolfstone if in doubt.
- This product is not intended for professional or medical use.

Service & contact

More information and instructional videos can be found at www.rolfstone.co.uk/faq
Do you have any questions? Please feel free to contact us. We believe it's important that everyone can fully enjoy their purchase.

Send us an email at service@rolfstone.com and you will receive a response within two working days.

Enjoy using your Rolfstone Heating Blanket!



James Wattstraat 20A

1817 DC Alkmaar

Netherlands

Email: service@rolfstone.com

English